

BENEFITS BOOKLET

PROCEDURE 500.04 PART TIME LIMITED EMPLOYEES

Effective January 1, 2022 – December 31, 2022



CONTACT INFORMATION

HUMAN RESOURCES & PROFESSIONAL DEVELOPMENT DIVISION

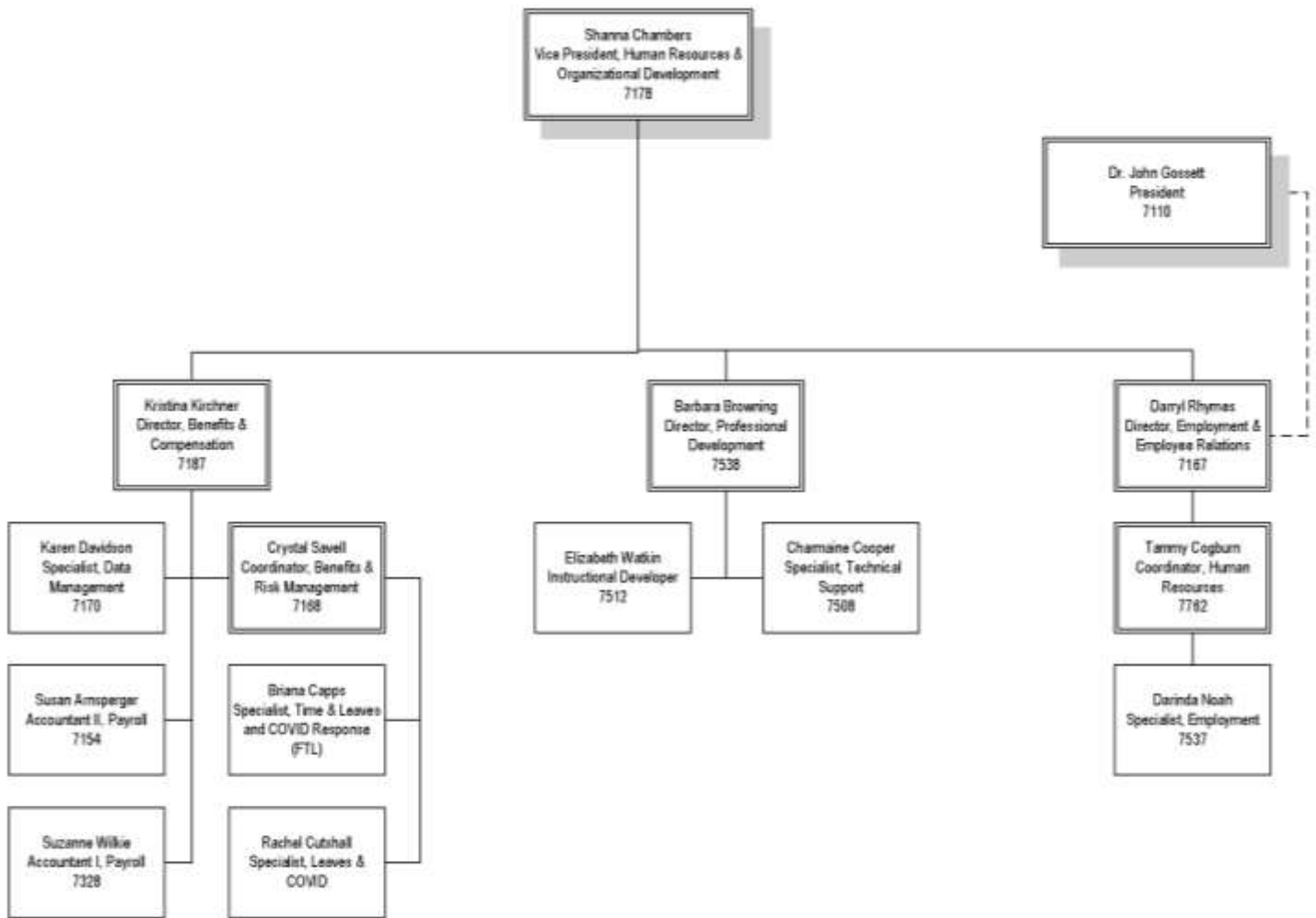
		(828)
Susan Arnsperger o susanaarnsperger@abtech.edu	Payroll Accountant II	398-7154
Barb Browning o barbaracbrowning@abtech.edu	Director of Professional Development	398-7538
Briana Capps o brianabcapps@abtech.edu	Time & Leaves and COVID Response Specialist	412-2261
Shanna Chambers o shannarchambers@abtech.edu	Vice President of Human Resources & Organizational Development	398-7178
Tammy Cogburn o tammypcogburn@abtech.edu	Human Resources Coordinator	398-7762
Charmaine Cooper o charmaineicooper@abtech.edu	Technical Support Specialist	398-7508
Rachel Cutshall o rachelacutshall@abtech.edu	Leaves & COVID Specialist	450-5386
Karen Davidson o karenbdavidson@abtech.edu	Data Management Specialist	398-7170
Kristina Kirchner o kristinalkirchner@abtech.edu	Director of Benefits & Compensation	398-7187
Darinda Noah o darindawnoah@abtech.edu	Employment Specialist	398-7537
Darryl Rhymes o darrylrrhymes@abtech.edu	Director of Employment and Employee Relations	398-7167
Crystal Savell o crystalmsavell@abtech.edu	Benefits & Risk Management Coordinator	398-7168
Elizabeth Watkin o elizabethhwatkin@abtech.edu	Instructional Developer	398-7512
Suzanne Wilkie o suzanneewilkie@abtech.edu	Payroll Accountant I	398-7328
HR Fax o hr@abtech.edu	Secure Fax Line	232-5004
Benefits HR Fax o benefitshr@abtech.edu	Secure Fax Line for Benefits Related Items	281-9693

SUNNICREST OFFICE HOURS ARE MONDAY – FRIDAY 9:00 AM – 5:00 PM

APPOINTMENTS ARE REQUIRED

ORGANIZATION CHART

HUMAN RESOURCES & ORGANIZATIONAL DEVELOPMENT



ELIGIBILITY AND PAYROLL

PART-TIME TEMPORARY EMPLOYEE

PROCEDURE 503.05

A Part-Time Temporary (also known as "Limited") employee whose work time averages less than 30 service hours per week or 130 hours per month with no expectation of recurring employment. This employment category includes curriculum and continuing education adjunct faculty.

PROFESSIONAL LIABILITY INSURANCE

Coverage of up to \$1,000,000 is provided to all faculty, staff, Board members, and volunteers for wrongful acts and defense of any civil suit alleging a wrongful act. This insurance does not provide coverage for criminal acts. Insurance coverage is subject to all the terms and conditions contained in the insurance policy.

STATUTORY BENEFITS

WORKERS COMPENSATION

WORKERS COMPENSATION

<https://abtechedu.sharepoint.com/sites/EmployeeSafety/SitePages/Worker's-Compensation.aspx>

All employees are covered by the NC Workers' Compensation Act as defined by N.C. Gen. Stat. §§ 97-2(1), 97-2(3), 97-93.

All workplace incidents must be reported immediately, even if you do not believe medical treatment will be sought – this ensures that there are no delays or complications should care be necessary. Please make sure you see an approved provider and do not give them your personal health insurance information – just let them know it happened at work. [Visit the Employee Safety – Worker's Compensation SharePoint](#) for more information such as finding the [Employee Incident Process & Approved Medical Facilities](#) form and the [Incident Reporting Packet](#).

SOCIAL SECURITY/ MEDICARE

Employees are required to pay the established percentage of earnings for Social Security/Medicare. The College pays the established employer percentage.

UNEMPLOYMENT COMPENSATION INSURANCE

The College participates in the Unemployment Compensation Insurance Programs through the State of North Carolina. Benefits are based on earnings prior to unemployment and the reason for leaving the College.

LEAVE PLANS

Policies and Procedures 507

FAMILY AND MEDICAL LEAVE - NOTE: THIS LEAVE REQUIRES YOU TO NOTIFY HR

Pursuant to the Family and Medical Leave Act of 1993 (FMLA) and as amended by the National Defense Authorization Act of 2008, Pub. L.110-181, and the Department of Labor's regulations any eligible employee may be granted up to a total of 12 weeks of unpaid job-protected family and medical leave.

MILITARY LEAVE - NOTE: THIS LEAVE REQUIRES YOU TO NOTIFY HR

Military leave shall be granted to employees of the State for periods of service in the uniformed services in accordance with G.S. 127A-116 and the Uniformed Services Employment and Reemployment Rights Act of 1994 (USERRA). Military leave shall also be given for state military duty to members of the State Defense Militia as outlined in Rule .0820 and the Civil Air Patrol as outlined in Rule .0806.

COMPENSATORY LEAVE (COT) - NOTE: THIS LEAVE REQUIRES SUPERVISOR APPROVAL

Non-exempt employees will receive compensatory leave in lieu of overtime pay. Compensatory leave will be earned at the rate of one and one-half hours for every hour worked over 40 in a work-week and/or if an employee is required to work a College Holiday. Compensatory leave will be earned at the rate of two hours for every hour worked on a Federal Holiday and/or if an employee is required to work when the College is closed during inclement weather.

CHILD INVOLVEMENT LEAVE

The College will grant four hours of unpaid leave per calendar year to any employee who is a parent, guardian or person standing in loco parentis of a school-aged child so that the employee may attend or otherwise be involved at that child's school.

ADDITIONAL BENEFITS

STATE EMPLOYEES CREDIT UNION

www.ncsecu.org

Membership in the State Employees' Credit Union is open to all full-time and part-time employees. Services include banking, savings, and loans. More information may be obtained by visiting one of the local offices or by visiting their website.

WELLNESS COMMITTEE

https://abtechedu.sharepoint.com/sites/GRP_A-BTechWellness

The Employee Wellness Committee provides no cost or a minimal fee programs to all faculty and staff with the purpose of supporting the mental, emotional, and physical well-being of the College family. Planned events and activities provide sessions on educational topics, physical activities, and the use of College facilities to include the gym, weight room, staff yoga, staff martial arts, UNCA swim passes, and more. Be sure to keep an eye on your work email for announcements of these Wellness benefits!

PARKING

(828) 398-7114

<https://abtech.edu/about/campus-safety/parking-decals>

All employees are provided with parking registration free of charge. Please submit your request online to obtain your parking sticker.

EMPLOYEE ASSISTANCE NETWORK

(828) 252-5725

www.eannc.com

The College has pre-paid the cost of five diagnostic, referral, and/or counseling sessions per separate eligible instance for employees and anyone living under their roof. This is a confidential service that provides professional and/or personal assistance in a myriad of areas. Please contact the Employee Assistance Network to schedule an appointment or to learn more.

EAN offers appointments in person at their offices, virtually by a secure video platform or by phone.

Call or email an Intake Coordinator to decide on the location and type of appointment that works best for you.

Phone: 828-252-5725/800-454-1477

Email: ean@eannc.com

Online at: EANNC.com

A-B TECH HEALTH CLINIC

ON-CAMPUS CARE FOR ALL STUDENTS & EMPLOYEES At the A-B Tech Health Clinic



NEW Hours: THURSDAYS, 1 to 5 p.m.

February 3, 10, 17, 24 | March 3, 10, 17, 24, 31 | April 7, 14, 28
May 5, 26 | June 2, 9, 16, 23, 30

Location: Ferguson Allied Health and Workforce Development Building 115.17

Cost: \$10 for students (with student ID)
Student Vouchers are available for a free visit during clinic hours.

\$10 for employees.

To Make Appointments:

Dial Extension 7570 or email healthclinic@abtech.edu
Walk-in clients are welcome!



- Need a Student Physical? Come see us! Student Physicals are \$20.00
- TB Testing now available -- \$15.00
- Flu shots will be available--\$5.00 for all students and any part-time/adjunct employees.
- And much more!

We have appointments available and walk-ins are always welcome. Feel free to email Healthclinic@abtech.edu with any questions you may have.

COVID Testing:

We are offering FREE COVID Testing for those who meet the COVID-19 testing requirements. Testing is done by appointment only with a referral from the COVID Team. If you are currently exhibiting ANY of the COVID-19 symptoms or if you have had a direct exposure to an individual who has tested positive for COVID, please fill out the self-reporting form here: [COVID-19 Self-Reporting Form \(maxient.com\)](https://www.maxient.com) and the COVID Team will give you further guidance.

We also have a food pantry that is free to all students and staff! Please feel free to donate!



ABTech

Community College

Last Update: February 2022